

# Clinical correlations of a streamlined molecular assay based on AmpliDeX® PCR/CE technology that determines repeat size for both normal and expanded alleles in *DMPK* for myotonic dystrophy type 1

Bradley Hall<sup>1</sup>, Pamela J Snyder<sup>2</sup>, Jon Kemppainen<sup>1</sup>, Thomas W Prior<sup>2</sup>, Pranesh R Rao<sup>1</sup>, and Gary J Latham<sup>1</sup>  
<sup>1</sup>Research and Development, Asuragen, Inc., Austin, TX, <sup>2</sup>Department of Pathology, Ohio State University, Columbus, OH

## Summary

- Triplet repeat CTG expansions in the *DMPK* gene are causative for Myotonic Dystrophy Type 1 (DM1).
- Current laboratory workflows require both PCR and Southern blot (SB) analysis to adjudicate DM1 repeat status.
- We developed a single-tube assay based on AmpliDeX® PCR technology and capillary electrophoresis (CE) that resolves ≥200 CTG repeats and flags larger expanded alleles without the need for SB analysis.
- The prototype *DMPK* PCR/CE assay unifies gene-specific and repeat-primer designs in a streamlined procedure to generate sensitive and specific results across all categories of expanded alleles.

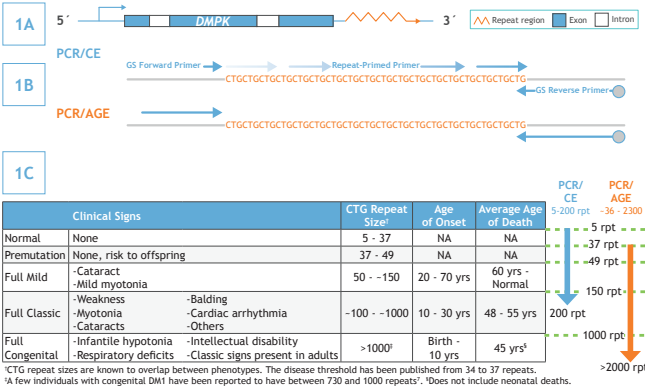
## Introduction

Myotonic dystrophy type 1 (DM1) is an autosomal dominant disease characterized by >50 CTG repeats in the 3' UTR of *DMPK*<sup>1</sup>. In the absence of family history, early DM1 symptoms are typically mild, overlapping with other disorders (e.g. baldness, myalgia, cataracts) and leading to under- or misdiagnosis of patients<sup>1</sup>. The introduction of molecular testing suggests a disease prevalence as high as ~1:2000<sup>2</sup>.

In clinical labs, DM1 testing requires a combination of multiple PCR reactions and Southern blot (SB) analysis because PCR cannot reliably amplify over 100 repeats. Not only does the process take up to 8 days, but allele drop-outs are often indistinguishable from homozygous samples<sup>3</sup>. The method and results described here enlist Asuragen's AmpliDeX® PCR technology to enable accurate CE-based sizing of *DMPK* alleles with resolution up to 200 repeats from a single-tube assay. Expanded alleles of up to 2300 repeats can be sized using agarose gel electrophoresis (AGE).

## Materials and Methods

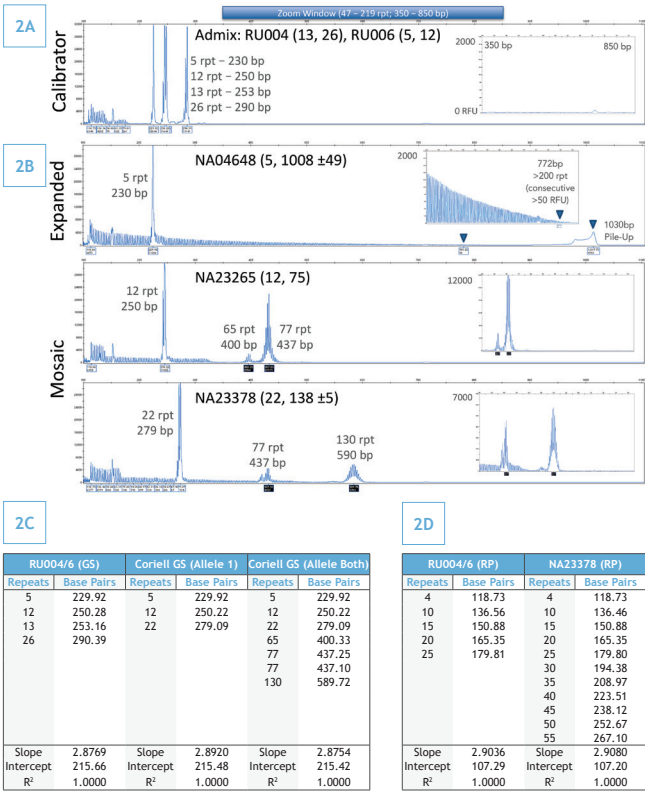
Genomic DNA (gDNA) was isolated from whole blood or buccal swabs from 108 presumed healthy donors (Asuragen and OSU) and 113 DM1-affected patients (OSU). Donors had CTG repeat sizes ranging from 4 to 2,300 with degrees of mosaicism from none to high from previous SB analysis. Sample gDNAs were amplified using prototype AmpliDeX® PCR/CE *DMPK* alpha kit reagents\* (Asuragen) in laboratories at Asuragen and OSU by different operators on different days. FAM-labeled amplicons were resolved on 3130xL or 3500xL Genetic Analyzer CE instruments (Thermo Fisher) using POP7 polymer, with 2.5 kV, 20 sec injection and 19.5 kV, 40 min run on either 36 cm (3130xL) or 50 cm (3500xL) capillaries. Genotyping was achieved following analysis using a ROX 1000 size ladder (Asuragen) and a four-point calibrator. Select samples were also sized by AGE using Reliant Mini 12-well precast 1% SeaKem Gold agarose gels (Lonza), Quick-Load 2-Log DNA ladder (NEB) and Bionic Buffer (Sigma).



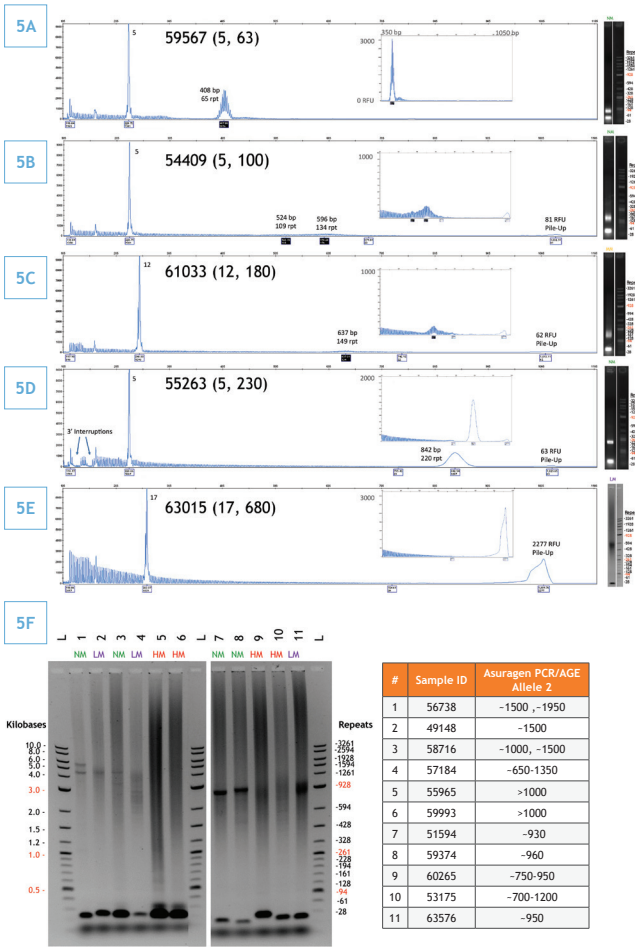
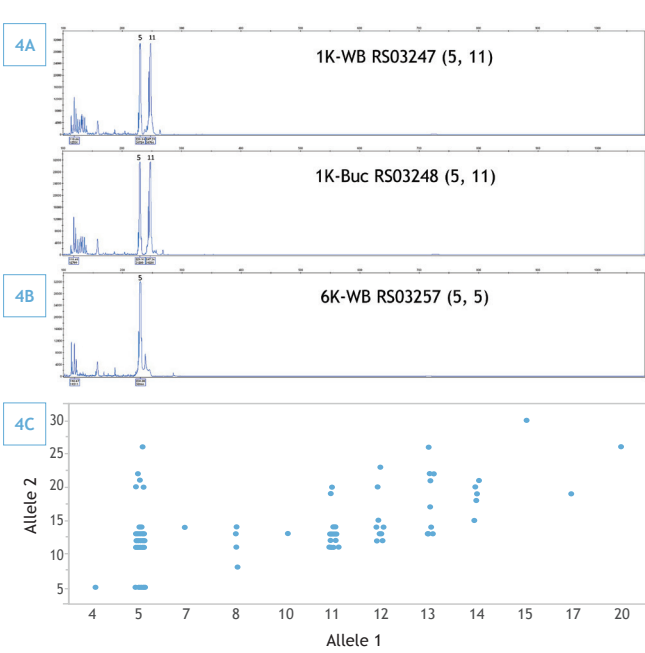
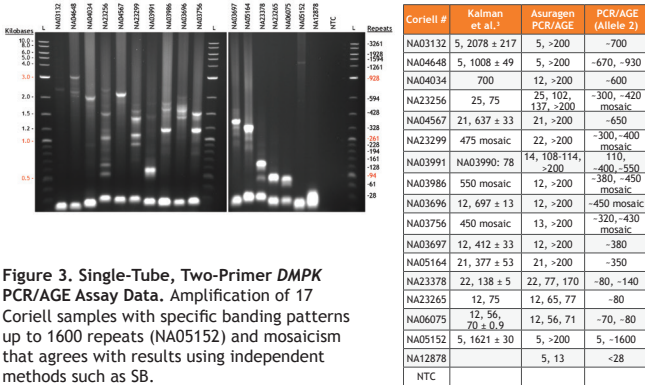
**Figure 1. *DMPK* Gene Map and Correlation of Phenotype and CTG Repeat Length in DM1 with Assay Sizing Ranges.** A) DM1 is caused by the expansion of the trinucleotide repeat CTG in the 3' UTR of *DMPK* located at Ch 19q13.3. B) The assay consists of two gene-specific (GS) primers (FAM-labeled reverse primer), and one repeat primer (RP) that can hybridize and prime anywhere in the repeat region. The assay produces two complementary data outputs in a single-tube: GS amplicons provide sizing of normal and expanded alleles (CE and AGE), whereas short and long alleles are either enumerated or flagged by RP stutter patterns (CE only). C) Table correlating phenotype to genotype adapted from Bird et al.<sup>6</sup> with associated assay sizing.

\*Disclaimer: The product is still under development. Its future availability and performance cannot be ensured. Presented at ASHG 2017 - 2505F

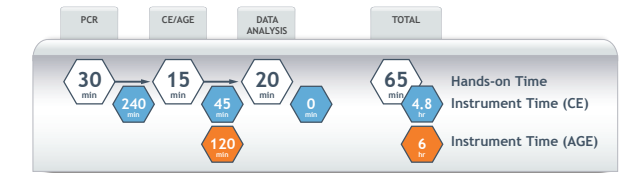
## Results



**Figure 2. Single-Tube, Three-Primer *DMPK* PCR/CE Assay Data.** A) Normal samples were sized from GS peaks. Heterozygous samples were differentiated from homozygous with the repeat profile. When only one peak is present, the lack of expanded repeat pattern indicates homozygosity (Figure 4B). Reference genotypes are provided at the top of each trace. B) Expanded samples display one normal allele with a larger second GS peak and/or expanded repeat pattern. Samples containing more than 230 CTG repeats also display an aggregated peak at ~1030 bp ("Pile-up"). C and D) To determine repeat numbers from fragment mobility, either an admixture of normal (RU004 and RU006) or Coriell samples with known genotypes such as NA04648, NA23265 and NA23378 could be combined to create a calibrator. Either GS C) or RP peak mobility D) were used for calibration; both provided similar values for the slope (average 2.88) and "0 repeat" y-intercept (average 215 for GS or 107 for RP) used in the linear fit.



**Figure 5. Concordant *DMPK* PCR Assay Results Across 113 DM1 Clinical Samples.** A) Representative sample 59567 with well-defined GS peaks by PCR/CE, no mosaicism and no pile-up peaks. Genotypes labeled at the top of each trace reflect independent OSU results (by SB). B) Representative sample 54409 with 134 CTG repeats. C) Sample 61033 with a 149 repeat amplicon and pile-up peak. D) Sample 55263 with 220 repeat peak and a pile-up peak. E) Sample 63015 with substantial pile-up peak. In total, 70/113 samples contained more than 350 repeats (by SB), and 10 contained interruptions. F) AGE was performed on a subset of samples containing expansions up to 2300 repeats (sized by SB) with repeat sizing by AGE listed. The samples near and above the congenital border are shown. NM, No mosaicism. LM, low mosaicism. HM, high mosaicism (as previously determined by SB at OSU).



**Figure 6. The Prototype *DMPK* PCR/CE Workflow is Streamlined from Sample-to-Answer.** The assay can be performed within a 7 hr work-shift for either PCR/CE (for 4-24 samples with per injection run times) or PCR/AGE (12 samples). Total hands on time is ~1 hr.

## Conclusions

- We report the first single-tube, long-read PCR technology that can resolve *DMPK* zygosity and genotype alleles across the categorical range of repeat expansions.
- The PCR/CE assay is able to differentiate normal, mosaic and expanded samples by sizing 4 to at least 200 repeats, flagging >200 repeats, and identifying interruptions.
- The PCR/AGE assay is able to size expansions up to 1600 repeats, well past the boundary associated with congenital cases.
- Using both PCR/CE and PCR/AGE assays, OSU demonstrated 100% sensitivity for clinical samples with up to 500 repeats, and accurately flagged larger expansions across all 113 samples.
- The PCR based workflow significantly reduces the burden of SB testing for *DMPK* expansions by substantially reducing the cost, reagents, labor, and time from sample to answer.

## References

- Kamsteeg E. J., et al. (2012) European Journal of Human Genetics 20:1203-1208.
- Suominen T., et al. (2011) European Journal of Human Genetics 19:776-782.
- Kalman, L., et al. (2013) Journal of Molecular Diagnostics 15(4):518-525.
- Lian, W., et al. (2015) Journal of Molecular Diagnostics 17(2):128-135.
- Prior, T. W. (2009) Genetics in Medicine 11(7):552-555.
- Bird, T. D. (2015) Gene Reviews <https://www.ncbi.nlm.nih.gov/books/NBK1165/>
- Redman J.B., et al. (1993) JAMA. 269:160-165.