

Market-leading, easy-to-use, high performance kit

for laboratories to reliably analyse
CGG repeats in the *FMR1* gene

AmplideX® PCR/CE *FMR1* Kit

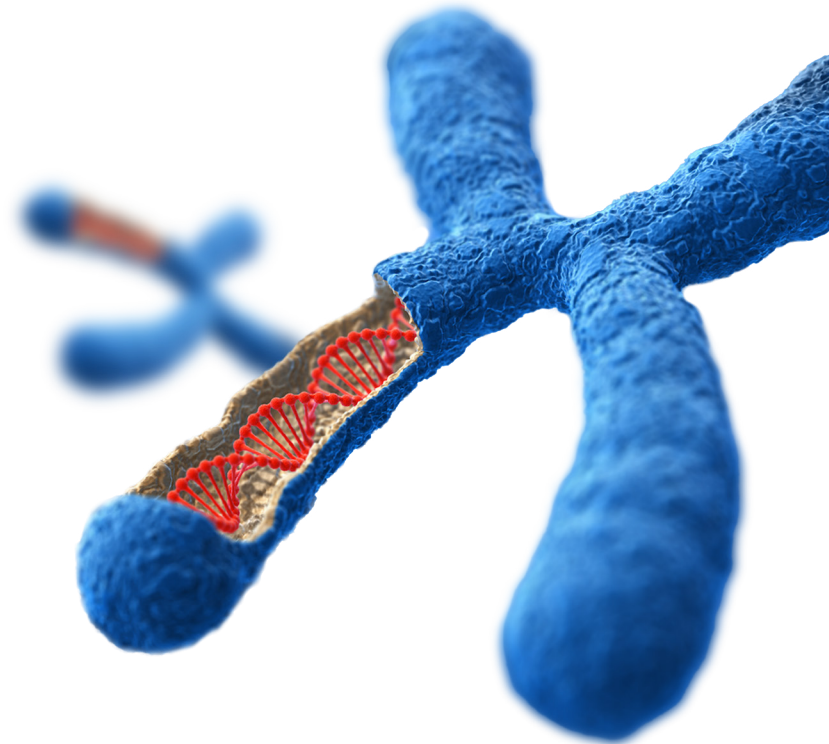
The unique Triplet Repeat Primed PCR (TP-PCR) design allows for sensitive detection of all alleles and simultaneous resolution of zygosity. This assay is optimised for use on widely established laboratory equipment and delivers *FMR1* results in under six hours.

Reduced Complexity

- Reliably amplifies GC-rich regions^{1,2}
- Automated result calling with included AmplideX® PCR/CE *FMR1* Reporter Software
- End-to-end solution including all necessary reagents

Optimised Workflow

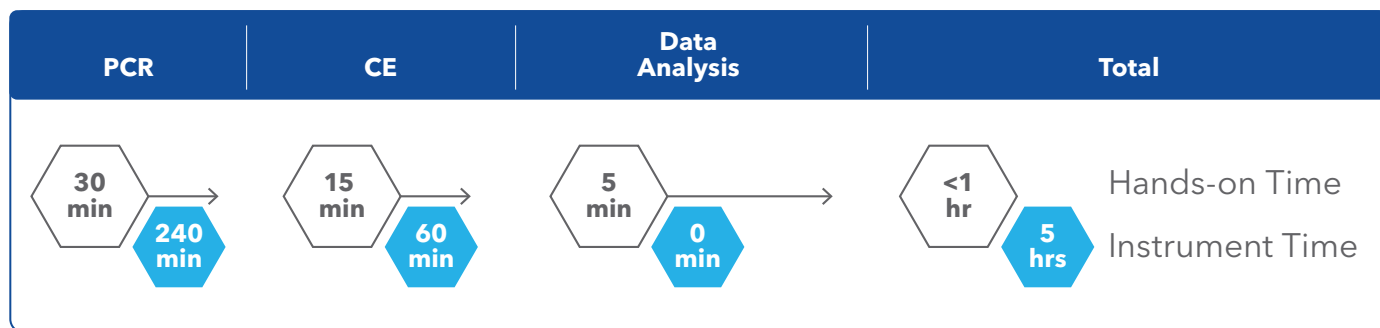
- Eliminates the need for Southern blot analysis
- Produces results in less than a day
- Scalable workflow and high throughput



Quality Performance

- Accurate sizing of up to 200 repeats
- Detection of low abundance full mutation size mosaics with up to at least 1300 CGG repeats
- Greater accuracy with up to 875-fold more sensitivity than traditional Southern blot techniques¹
- Resolution of female homozygous and heterozygous samples and indication of presence of AGG interruptions

AmplideX PCR/ CE *FMR1* Kit⁺ Workflow – <6 hrs from DNA to data



For up to 24 Samples

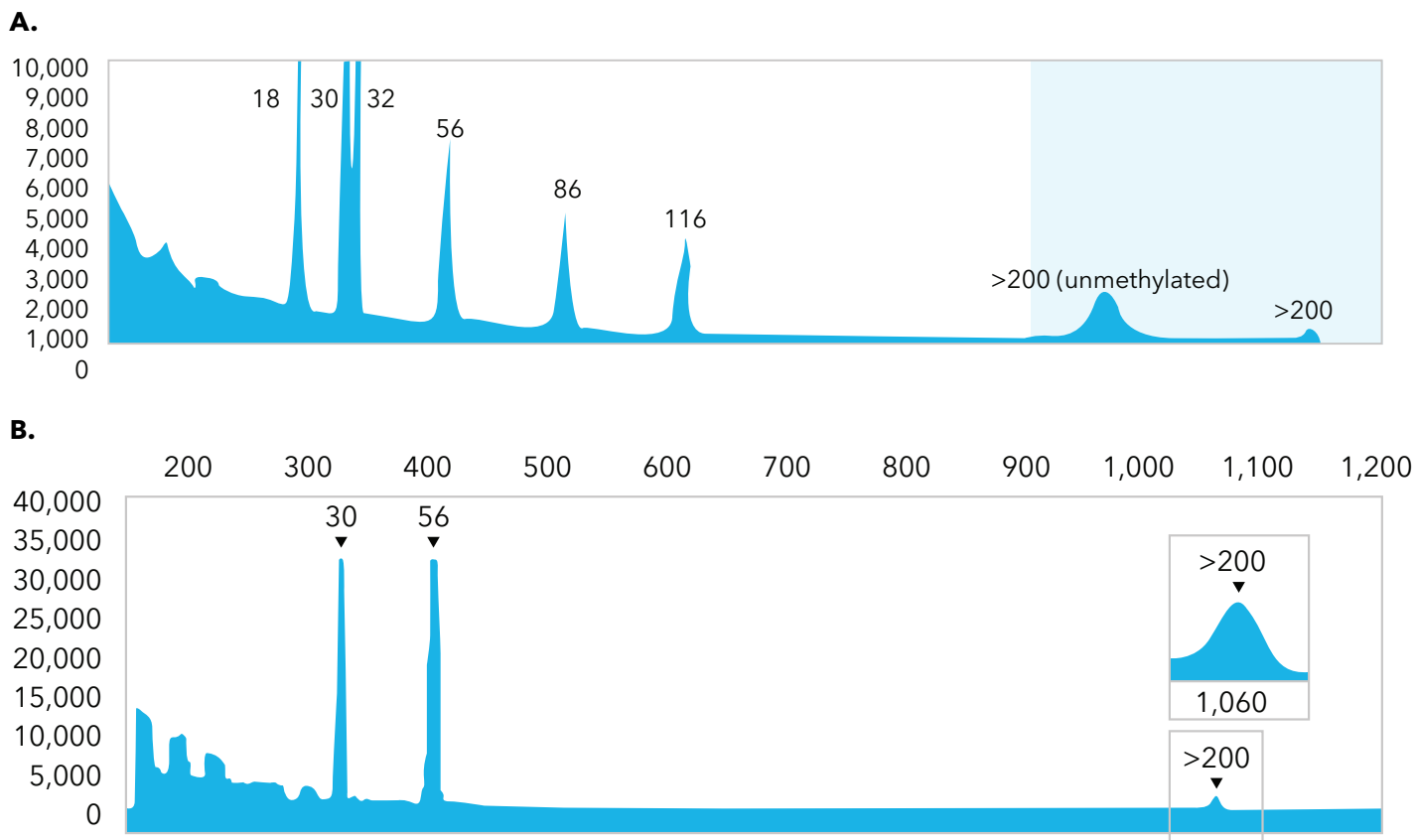
Sizing Accuracy and Sensitivity

A. Sizing Accuracy Demonstrated with the AmplideX PCR/CE *FMR1* Control* (Process Control)

The assay accurately sizes across the full spectrum with the *FMR1* control. The control includes peaks just 2 repeats apart (30,32) for precise sizing.

B. Sensitive Detection Demonstrated with the AmplideX mPCR *FMR1* Control* (Sensitivity Control)

Detection of low abundance full mutations is demonstrated by amplification of the sensitivity control, which contains 5% Full Mutation in a background of 95% Normal.



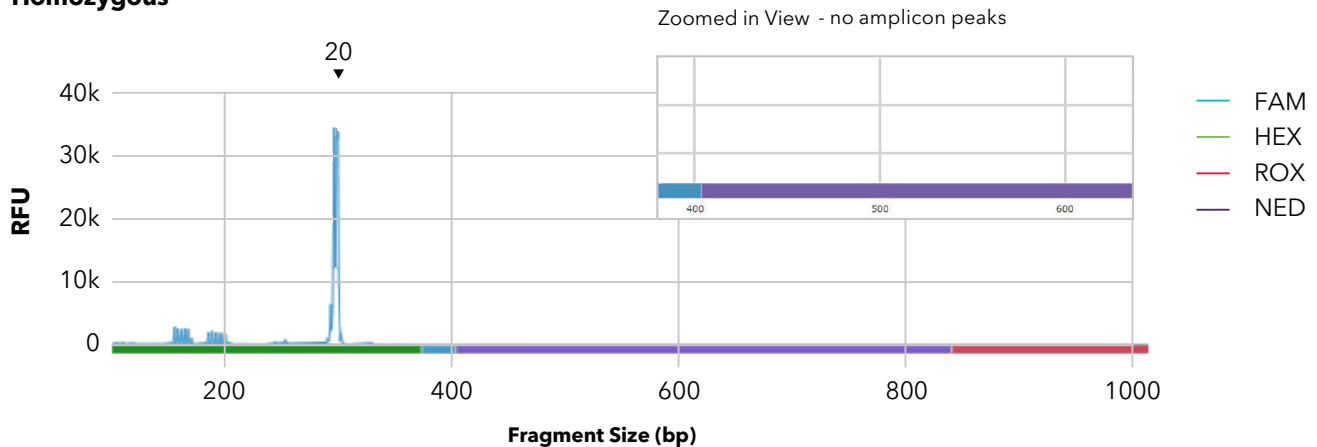
Clearly Resolves Female Zygosity

A. Absence of CGG primed amplicons beyond the detected peak shows lack of a longer, heterozygous peak.

B. CGG primed amplicons beyond the 20 CGG peak shows detection of longer, heterozygous peak, consistent with >200 CGG peak.

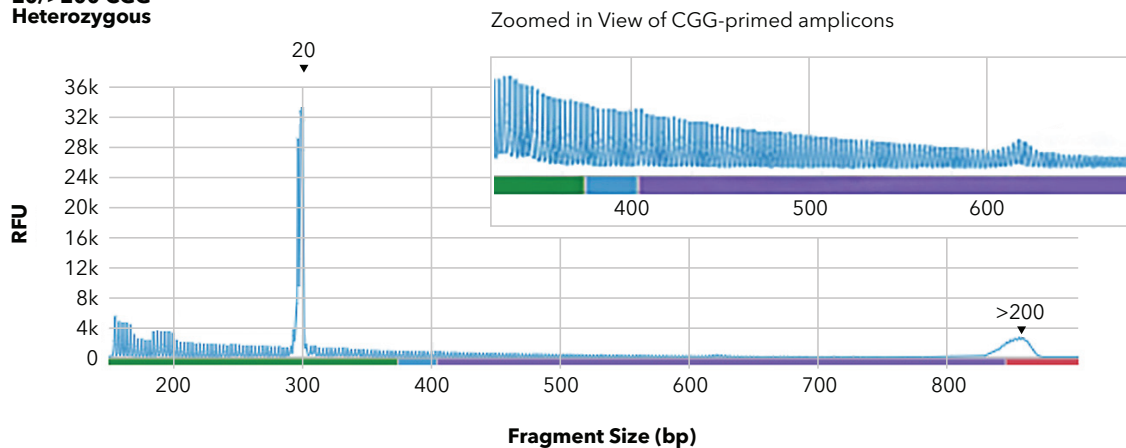
A.

**20/20 CGG
Homozygous**



B.

**20/>200 CGG
Heterozygous**



Ordering Information

Part Number	Product Description	Number of Reactions
76008	AmplideX PCR/CE <i>FMR1</i> Kit†	100
49513	AmplideX PCR/CE <i>FMR1</i> Control*	24 ul
49514	AmplideX mPCR <i>FMR1</i> Control*	24 ul

For more information, please visit asuragen.com/emea

†CE-IVD. For U.S. export only.

*For Research Use Only. Not for use in diagnostic procedures.

References

¹Filipovic-Sadic S, et al. Clin Chem. 2010;56(3):399-408.

²Visit our *FMR1* page to find peer-reviewed publications which evaluated the AmpliEx® PCR/CE *FMR1* reagents in the assessment of CGG repeats in the *FMR1* gene.



Contact Us



Bio-Techne® | R&D Systems™ Novus Biologicals™ Tocris Bioscience™ ProteinSimple™ ACD™ ExosomeDx™ Asuragen®

2000-0373
5195913323_MDD_FL_Updated-FMR1_MW